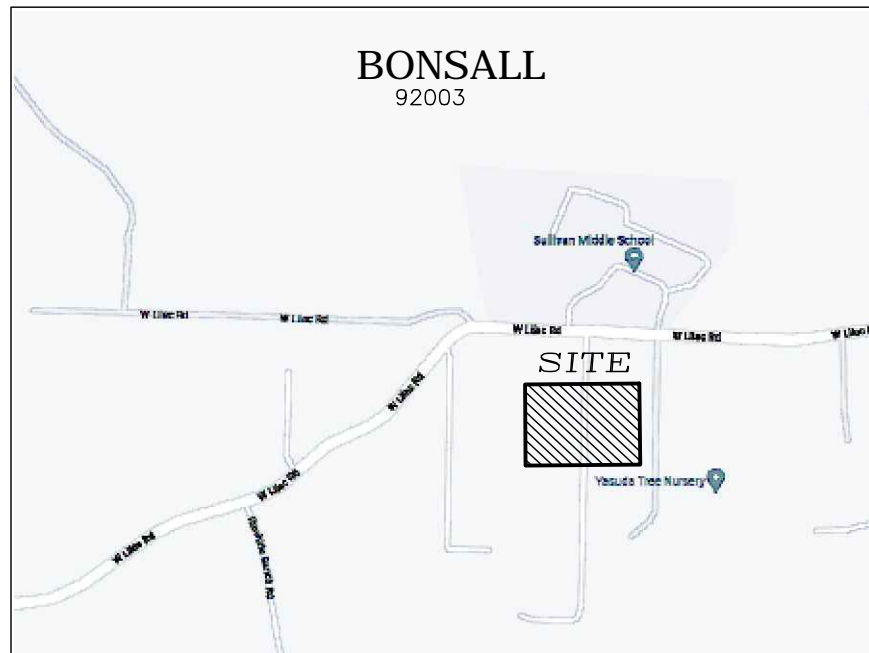
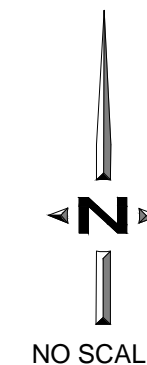
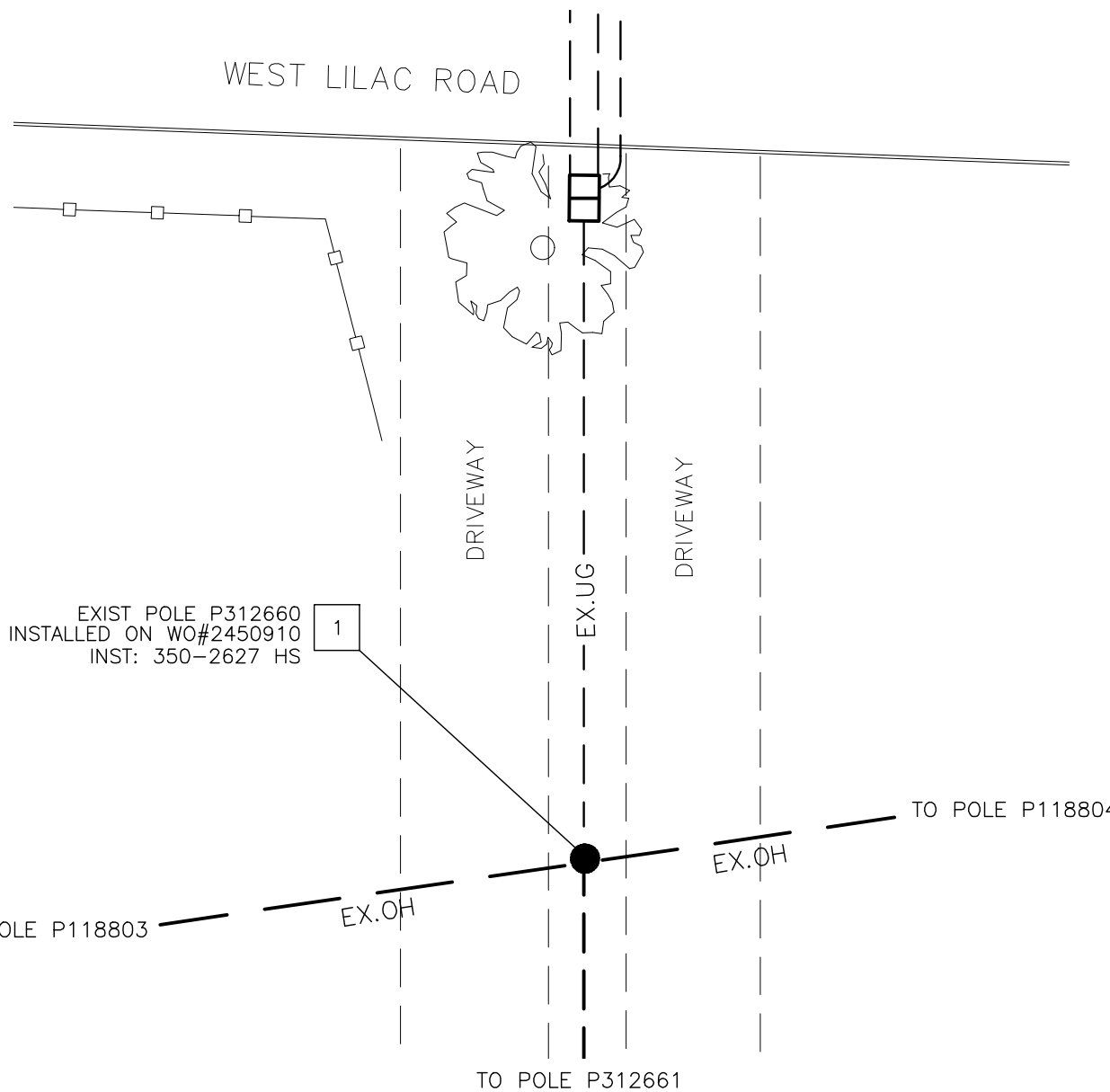


WEST LILAC PUMP STATION

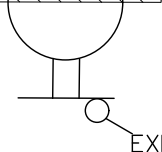
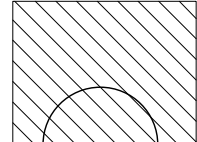
7220 W LILAC RD BONSALL



VICINITY MAP
NO SCALE 1088-A4



CLIMBING SPACE



EXIST 4" PRI

PRIMARY
CABLE POLE DETAIL

1 P254215



NOTES

- COORDINATE WITH UG SAP#300000469238
- EXISTING FACILITIES INSTALLED ON WO#2450910.
- IF QUESTIONS ARISE, CONTACT PLANNER.



Call 2 Working Days Before You Dig!
CALL 811

Copyright 2003 San Diego Gas & Electric Company. All rights reserved.
Removal of this copyright notice without permission is not permitted under law.

DES#80679918

San Diego Gas & Electric Design & Construction Management	PROJECT NOTIFICATION #	300000463354
	JOB NOTIFICATION #	300000591990
PROJECT MGR./PLANNER NAME & PHONE:	IAN MALONE 619-451-0749	
DESIGNED BY:	JEFF BUERSTER	
REVIEWED BY:	[Signature]	
	SHEET	FCO
	UD01	00
	SHT 1 OF 1	

WEST LILAC PUMP STATION