

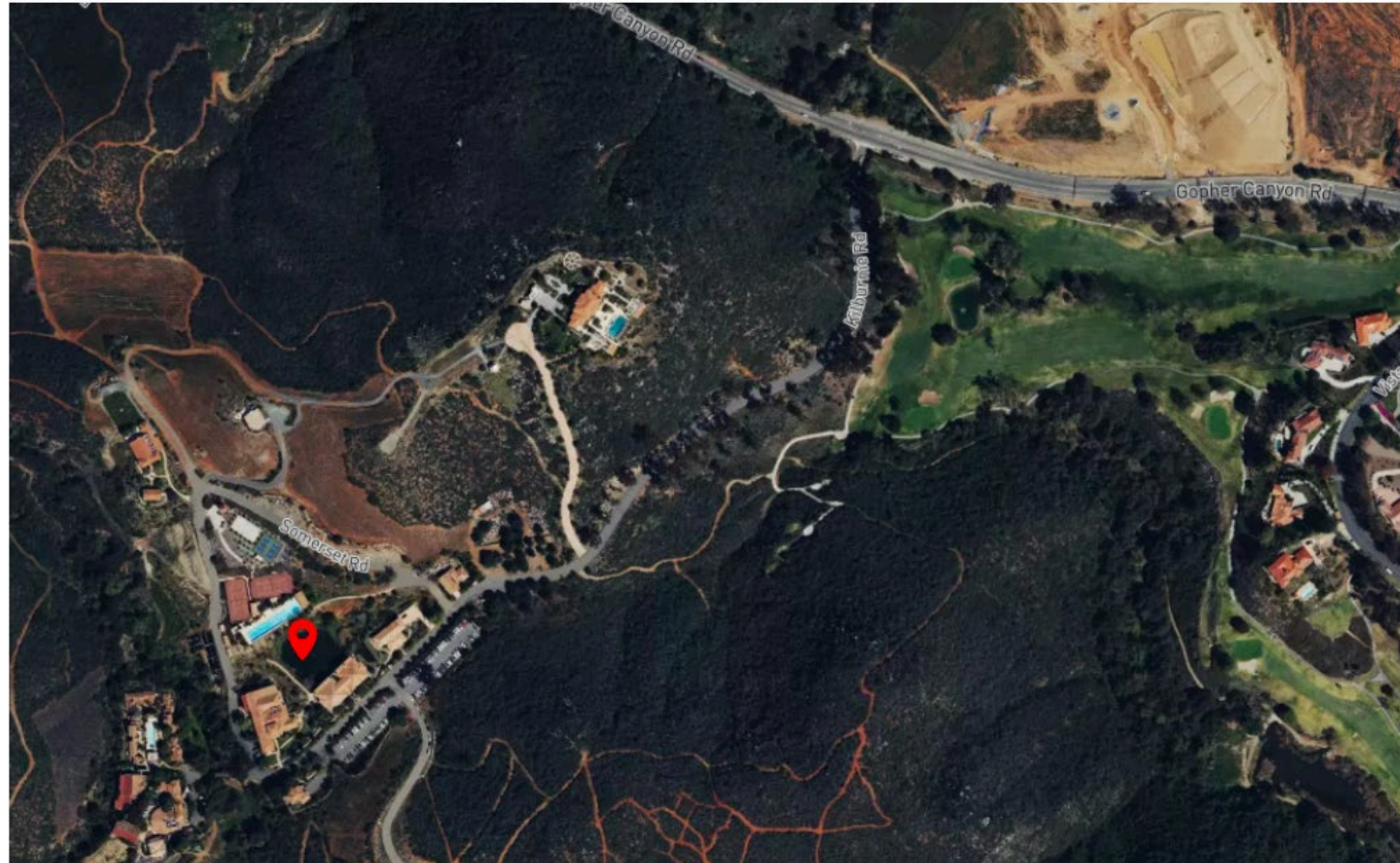
Sewer Service Agreement with Cal-A-Vie Spa

September 23, 2025



CAL-A-VIE SPA HAVENS (DIVISION 1)

- Located South of Gopher Canyon Road and Spa Haven Way.



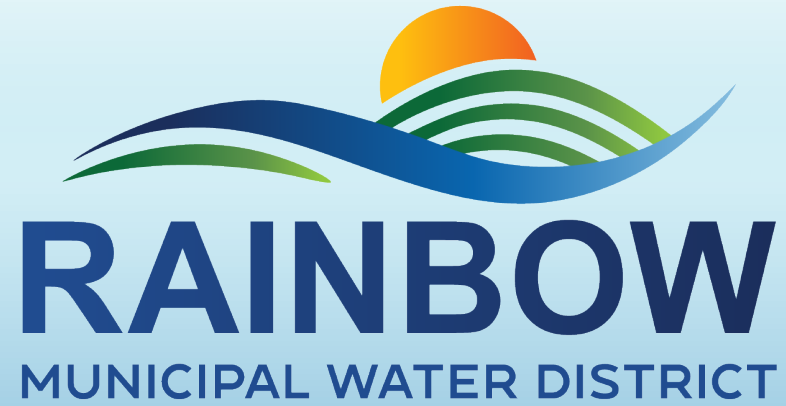
Cal-A-Vie Spa Havens (Division 1)

- The Developer informed the District of a proposed expansion which brought up the EDU count with the District. RMWD indicated there was a total of 23.5 EDUs paid for.
- Neither party could locate a fully executed Sewer Service Agreement (SSA).
- A sewer study was conducted by Transtech Engineers, Inc.
 - Study determined Cal-A-Vie is currently using 25.3 EDUs and the buildings under construction would need 5.8 additional EDUs.
- 1.8 EDUs were in arrears, and an additional 5.8 EDUs are required.
 - Developer to pay for 7.6 EDUs and enter into SSA with the District.
 - Future expansion of the facility estimates an additional XX EDUs, which will be paid for at the then current CAP Fee rate.

Estimate Sewer Capacity Fees

Description	EDUs	Sewer Capacity Fees	Total Due
Cal-A-Vie currently calculated using EDUs	25.3		
Buildings under construction EDUs	5.8		
District confirmed Cal-A-Vie paid EDUs	23.5		
Difference in confirmed, current usage, & under construction	7.6	\$ 18,861.00	\$ 143,343.60
Future Building EDUs*	37.2		
*capacity fees will be calculated once construction commences			

- By approving the SSA, Spa Havens will be obligated to pay 100% of the Sewer Capacity Fees totaling \$143,343.60



Questions & Discussion